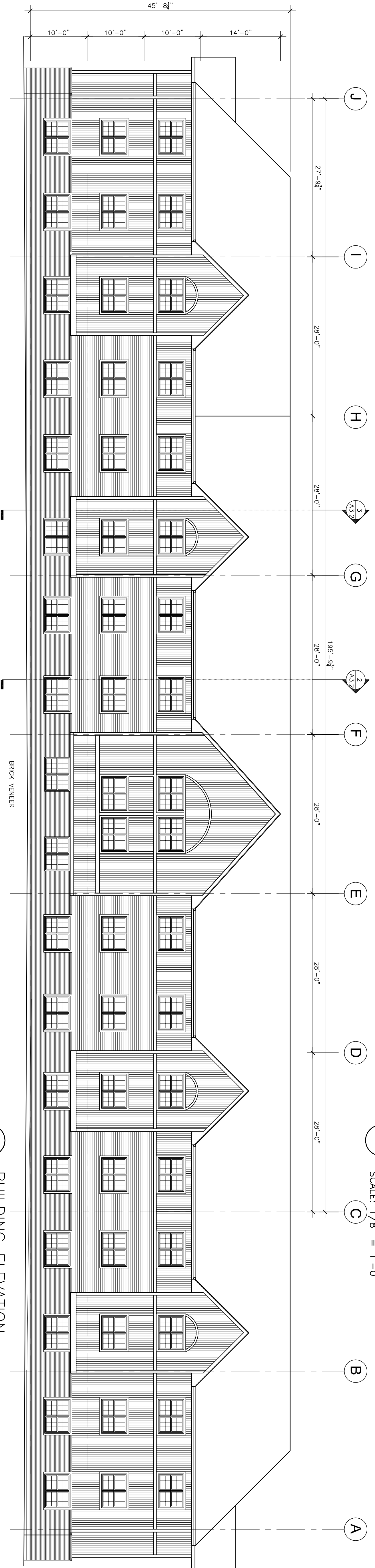
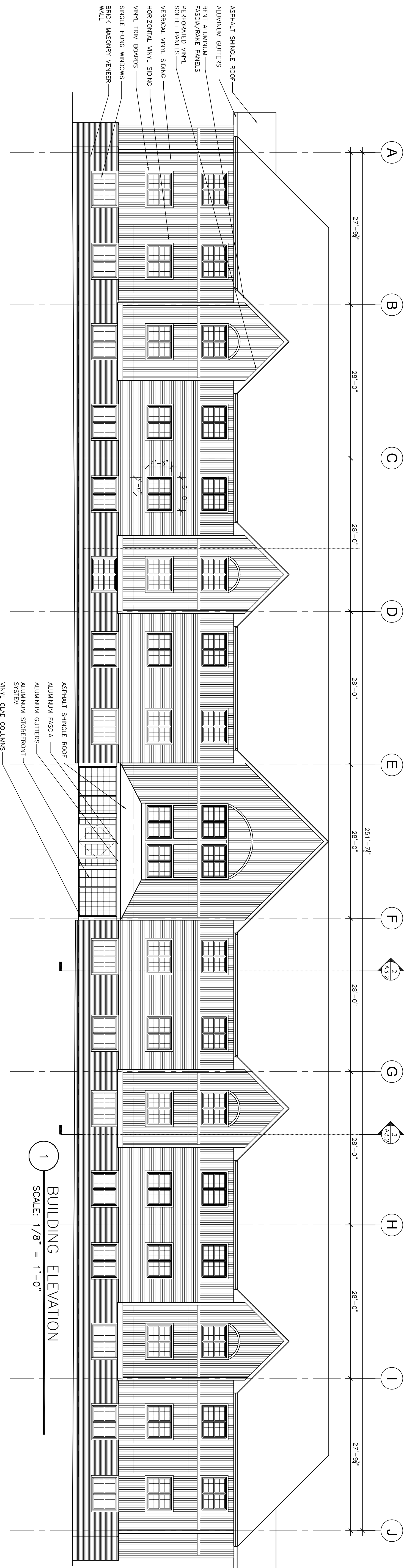


3 BUILDING ELEVATION  
SCALE: 1/8" = 1'-0"



2 BUILDING ELEVATION  
SCALE: 1/8" = 1'-0"



1 BUILDING ELEVATION  
SCALE: 1/8" = 1'-0"

# KEYSTONE PROPERTIES

PONDE PLACE  
MANSFIELD  
CONNECTICUT

SCHEMATIC  
DESIGN

EXTERIOR  
ELEVATIONS

SCALE:	
DATE:	MARCH 28th, 2007
CDI FILE:	
REVISION:	

A3.1